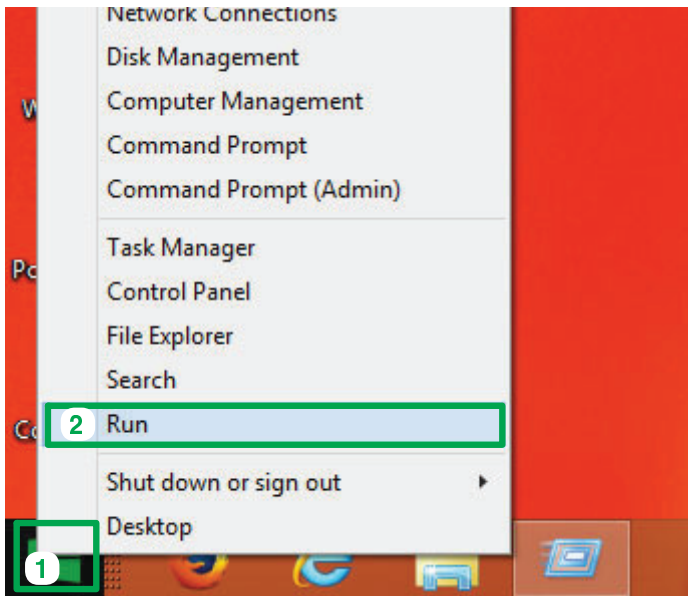
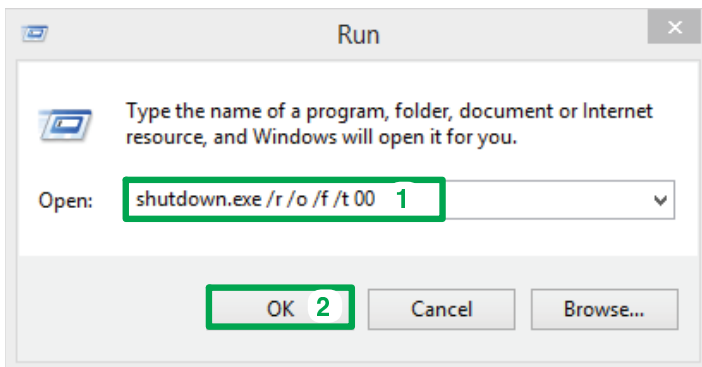


## Windows 8 and 8.1

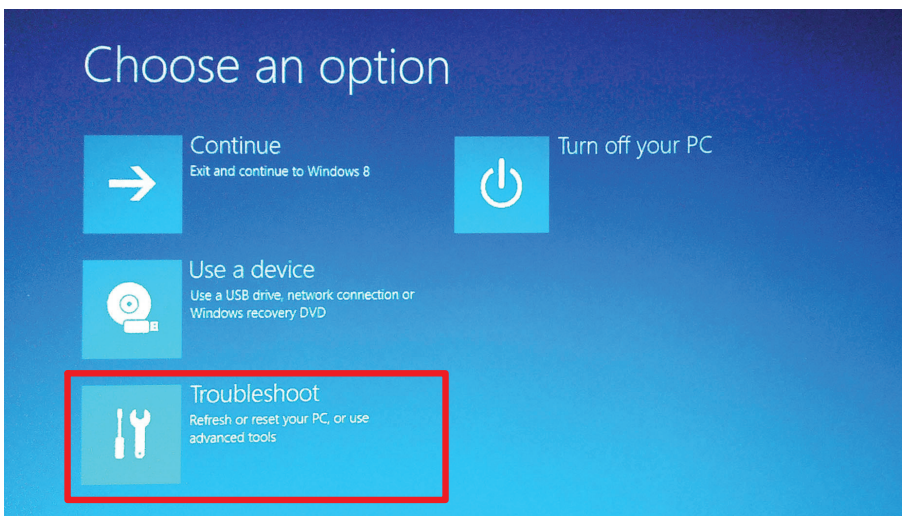
1. Right click on **Start** [1] and choose **Run** [2].



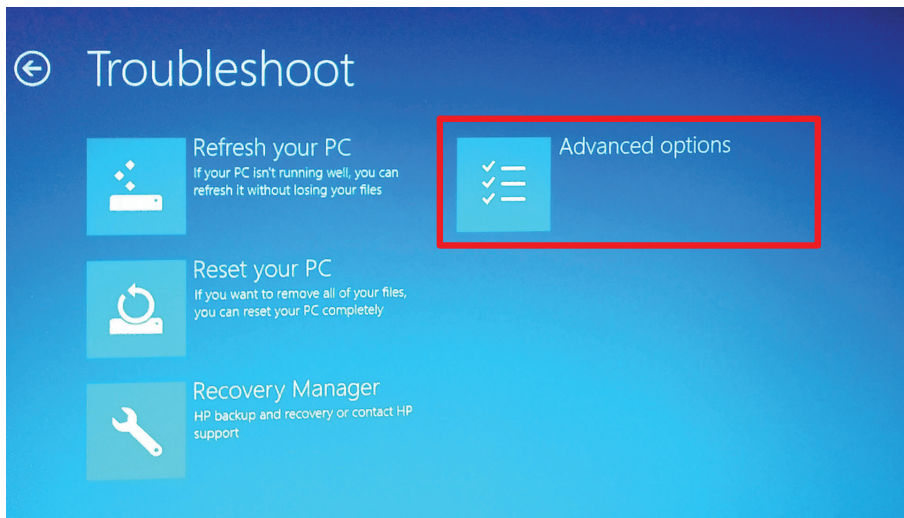
2. Write "**shutdown.exe /r /o /f /t 00**" (without inverted commas) [1] and press "**OK**" [2]



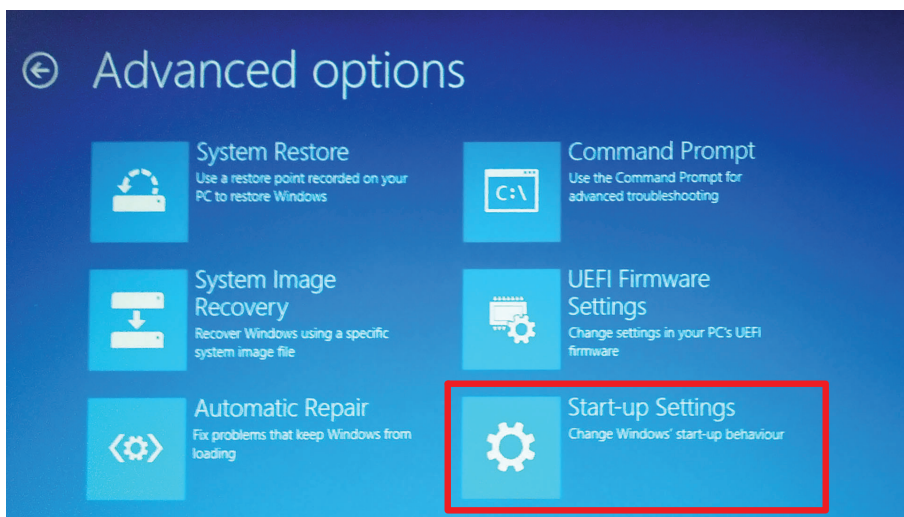
3. Wait for System restart. Press "**Troubleshoot**" on the next screen.



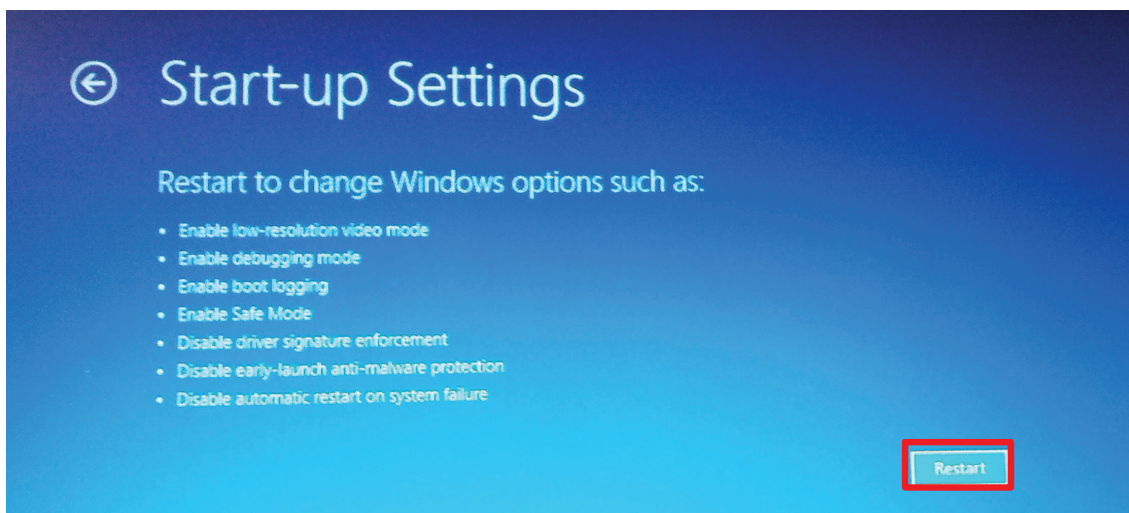
4. Press **"Advanced Options"** on the next screen.



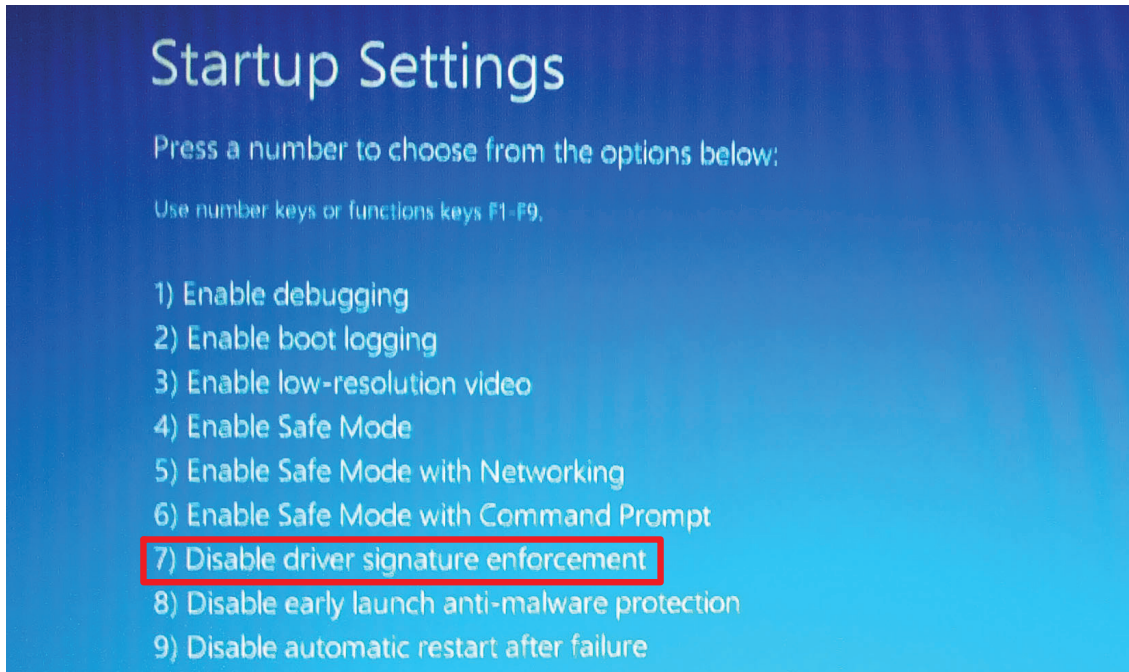
5. Press **"Start-up Settings"** on the next screen.



6. Press **"Restart"** on the next screen.



7. Wait for System restart. Press **F7 key** to "Disable Driver Signature Enforcement".



8. Wait for the complete System restart.